

TLP Sleep

The Listening Program® SLEEP is an auditory sleep aid that you listen to while you're going to sleep. Created by Advanced Brain Technologies with a neuroscientist, it uses nearly-inaudible sounds embedded in beautiful music to help you go to sleep faster and stay asleep longer.



TLP SLEEP uses embedded sounds that trigger the motion-induced sleepiness that babies experience while being rocked and that people feel while riding as a passenger in a car or on a train, while music simultaneously entrains the brain to the slower brainwave rhythms needed to sleep.

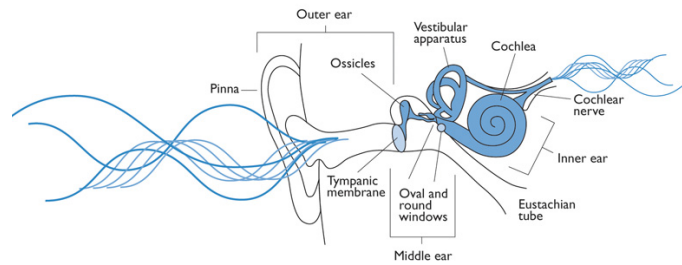
This combination results in a sleep that's natural, easy, restful and refreshing.



www.advancedbrain.com

THE LISTENING PROGRAM

The Ear



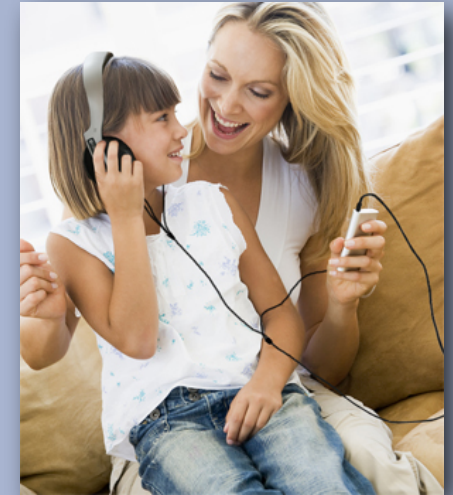
The Listening Program® (TLP) is a Music-Based Auditory Stimulation™ method that is an affordable, effective approach for enabling individuals with a broad range of challenges and abilities to achieve even more.

TLP's clinically-proven approach gently trains the auditory system to accurately process sound.

When auditory perception is distorted—whether through illness, injury, developmental or other challenges—auditory processing problems can lead to academic, emotional, cognitive and social challenges, including problems with the following:

- Attention and Concentration
- Memory
- Listening
- Speech and language
- Reading
- Communication
- Social skills
- Sensory integration
- Self-regulation
- Physical balance and coordination
- Vocal performance and musical ability

THE LISTENING PROGRAM®



Certified TLP Provider

**675 C South Jefferson Ave.
Cookeville, TN 38501**

p (931) 528-8822

f (931) 528-8825

**www.therapyandbalance.com
ttbc@therapyandbalance.com**

Individualized Listening Plan

After an initial client intake, TLP Providers will determine an appropriate, individual listening plan. Generally, listeners will use TLP once or twice a day for 15 minutes, five days a week.

The initial listening plan will take place over the course of at least a few months, followed by maintenance listening to build on specific benefits.

The listening plan can be adjusted to meet individual needs.



Price List

- Consultation Fee: \$25 (includes initial evaluation and all follow-up consultations by phone or in the office)
- Products:
 - TLP Level One CD with Sennheiser headphones \$493
 - TLP Level One iPod with Sennheiser headphones \$925
 - TLP Level One CD with bone conduction headphones \$1455
 - TLP Level One iPod with bone conduction headphones \$1775
 - TLP SleepPhones bundle \$325
 - Sound Health CDs \$15.95 each
 - Music for Babies CDs \$15.95 each
 - Music for Healing at the Speed of Sound \$15.95 each
 - Brain Builder PC for computer \$220

THE LISTENING PROGRAM

Level One Frequency Zone Chart

The Listening Program® provides progressive zone training of the entire neuroauditory system including the hearing (cochlea) and balance (vestibular) organs. The music in the program is organized in four categories; Full Spectrum (FS), Sensory Integration (SI), Speech and Language (SL), and High Spectrum (HS). Each album is color coded according to its category and corresponding frequency zone.

BLUE - Full Spectrum (FS)
INTEGRATION OF ALL ZONES

GREEN - Sensory Integration (SI)
FOUNDATIONAL/SENSORY

ORANGE - Speech & Language (SL)
COGNITIVE/COMMUNICATION

RED - High Spectrum (HS)
CREATIVE/ALERTNESS



Brain plasticity is the ability to change the way the brain functions to recover from deficits. The brain requires specific sensory stimulation frequently, with intensity, and for a sufficient period of time to create a change.

The Listening Program's psychoacoustically modified music and patent-pending production techniques are designed to stimulate, or "exercise," the different functions of the auditory processing system. This enables the brain to better receive, process, store and utilize the valuable information provided through the varied soundscapes in our lives such as music, language and the environment in which we live.

The Level One Kit includes 10 CDs/Programs from four TLP treatment categories, each designed to stimulate and balance the perception of sound frequency bands within the audible range of human hearing.

- Full Spectrum provides an overall organizing experience.
- Sensory Integration targets lower frequencies to stimulate functions such as balance, coordination, motor skills and more.
- Speech and Language targets mid to higher frequencies to stimulate the brain's ability for memory, attention, vocal control and more.
- High Spectrum targets high frequencies that impact creativity, intuition, energy and more.